

IGERT

INTEGRATIVE GRADUATE
EDUCATION AND
RESEARCH TRAINEESHIP



Soft Interfaces IGERT @ SYRACUSE UNIVERSITY

An interdisciplinary graduate program to train PhD scientists and engineers in the areas of biological membranes, biomaterials and nanostructured interfaces.

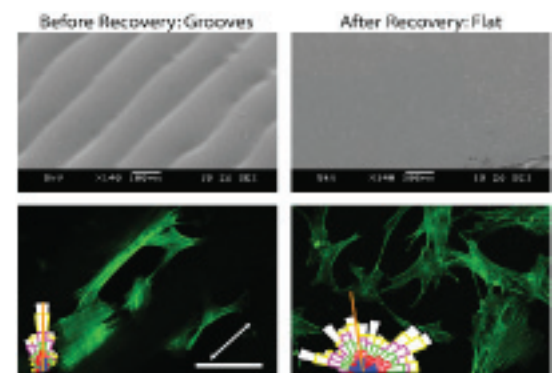
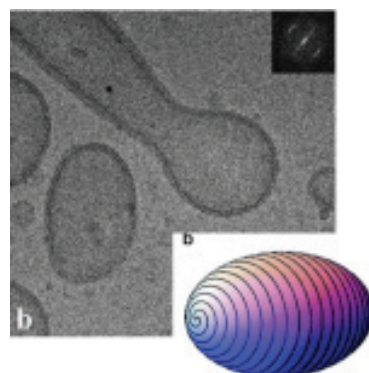
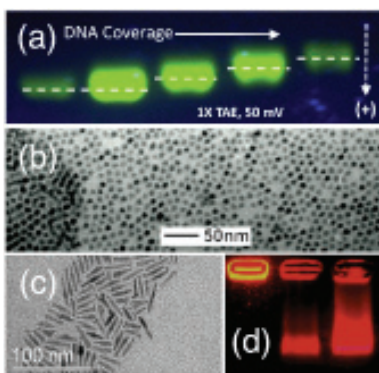
Eligibility:

- Must be US citizen or permanent resident
- Must apply and be accepted into one of the following five doctoral programs at SU:
 - Physics
 - Bioengineering
 - Chemistry
 - Biology
 - Chemical Engineering



Key Elements:

- a stipend of \$30k/year for the first two years; RA support after that
- an interdisciplinary, flexible course curriculum
- early engagement in research
- emphasis on developing skills for collaborative research and science communication
- scientists and engineers work alongside on collaborative projects



For more information and to apply, visit <http://soft-igert.syr.edu>